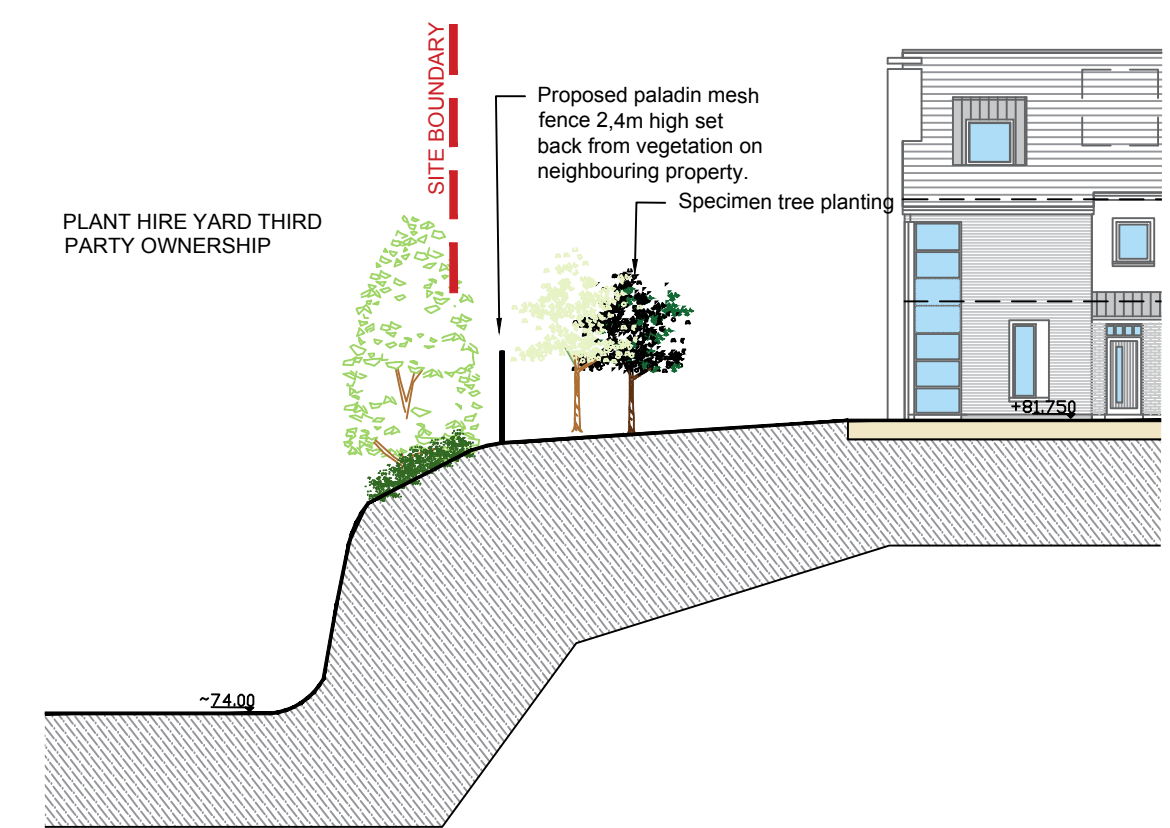
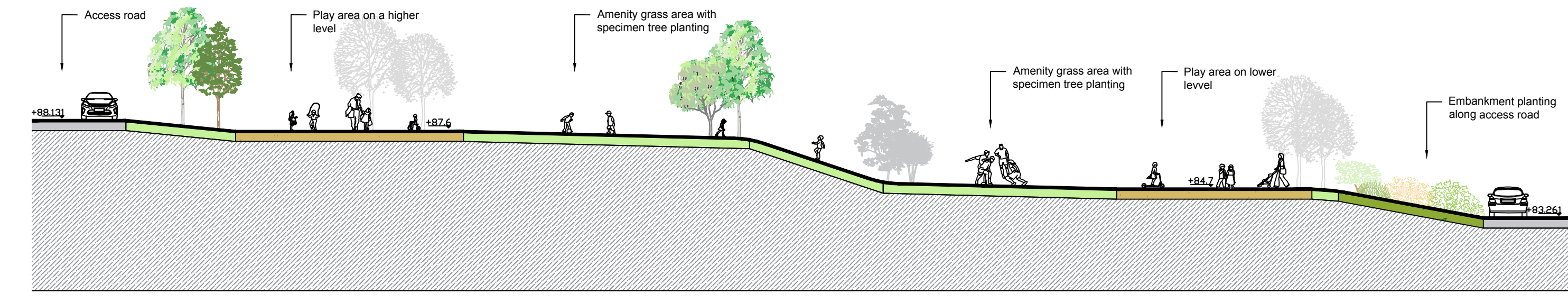




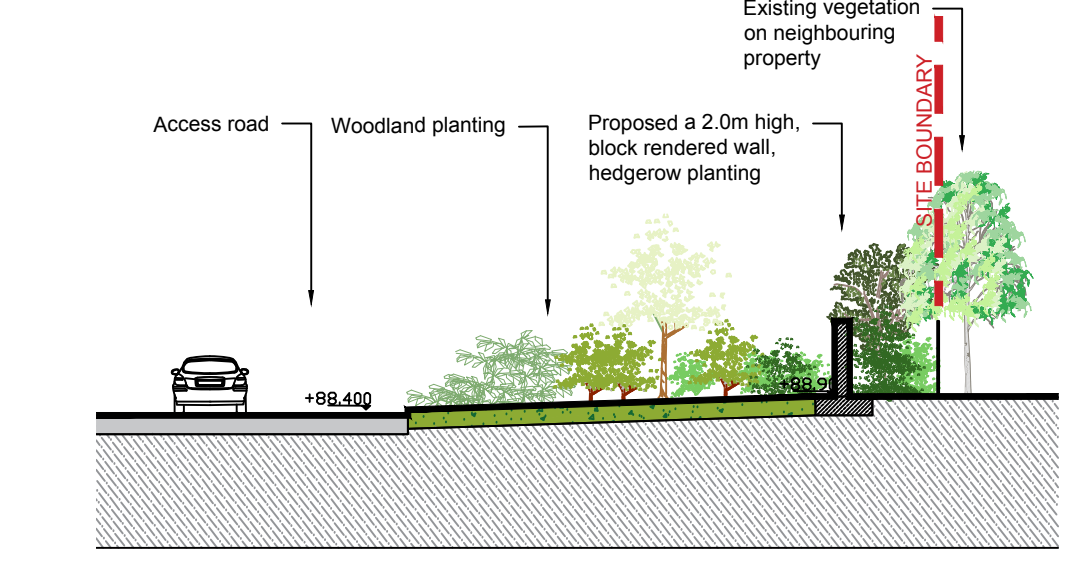
- ### LEGEND
- PUBLIC AMENITY GRASS
 - AMENITY GRASS RESIDUAL LANDS/MEADOWS
 - FUTURE PARK AREA
 - SCHOOL ZONED LAND TO BE RE-PROFILED FOR OVERBURDEN STORAGE
 - ZONED RESIDENTIAL LANDS
 - AREA DESIGNATED FOR PROVISION OF THE MAYFIELD KILBARRY LINK ROAD/BALLYHOOLY ROAD JUNCTION (NOTE STEEPLY SLOPING TOPOGRAPHY TO BE CONSIDERED)
 - PRIMARY CYCLE/PEDESTRIAN ROUTE 1:20 SLOPE
 - SECONDARY CYCLE/PEDESTRIAN ROUTE
 - MOWN OR GRASS PATH THROUGH MEADOW AREA
 - PROPOSED BUS STOP
 - NEIGHBOURHOOD & LOCAL PLAY AREA - compacted balliysuk gravel finish
 - SEATING AREAS
 - WAYLEAVE - 110 kV Constraint Corridor
 - LOCATION FOR 38kV TOWER
 - INDICATIVE LOCATION FOR BIRD BOXES
 - PLAY EQUIPMENT
 - CRECHE OPEN SPACE AREA WITH INDICATIVE SAFETY SURFACE, NATURAL PLAY ELEMENTS AND SENSORY PLANTING
 - FOOTPATH
 - ACCESS ROAD
 - RAMPED PEDESTRIAN CROSSING
 - SHARED SURFACE AREA
 - BIN STORE LOCATION
 - SMALL UNIT PAVING TO REAR GARDEN
 - FEATURE PAVING TO FRONT GARDEN
 - PAVING TO CAR PARK
 - FEATURE PAVING TO COURTYARD AND COMMUNITY CENTRE
 - PROPOSED RETAINING WALL
 - PROPOSED 1.8m HIGH WELD MESH FENCE
 - SITE BOUNDARY
 - LAND IN APPLICANT'S OWNERSHIP
- REFER TO ENGINEERS' DRAWINGS FOR SUDS MEASURES
FOR BOUNDARY TREATMENT REFER TO DRG. NO 17316-2-112.
- #### INDICATIVE SOFT LANDSCAPE
- STREET TREES TO INCLUDE:**
Pyrus calleryana 'Chanticleer', 20-25cm gth., 6m ht.
Ulmus 'Lutea', 18-20cm gth., 5m ht.
Tilia cordata 'Greengold', 20-25cm gth., 6m+ ht., 4str.
Quercus robur 'Koster', 20-25cm gth., 6m ht.
- SPECIMEN STREET TREES TO INCLUDE:**
Betula utilis var. *jacquemonti*, 14-16cm gth., 3-4m, RB.
Parrotia persica multi stem 14-16cm gth., 3-4m, RB.
Prunus serrula multi-stem 14-16cm gth., 3-4m, RB.
Fagus sylvatica, 14-16cm gth., 3-4m, RB.
Sorbus aucuparia, 14-16cm gth., 3-4m, RB.
Pinus sylvestris, 14-16cm gth., 3-4m, RB.
Liquidambar styraciflua, 14-16cm gth., 3-4m ht, RB
- WOODLAND PLANTING WITH UNDERSTOREY TO INCLUDE**
 Trees to be planted at 3m centres:
Quercus petraea, 12-14cm gth., 3m ht, BR.
Betula pendula, 12-14cm gth., 3mht, BR.
Fagus sylvatica, 12-14cm gth, BR.
Corylus avellana, MS 2.0-2.5m ht, BR.
Ainus glutinosa, 12-14cm gth, 3m ht, BR.
Pinus sylvestris, 120-150cm, RB.
Larix decidua, 120-150cm, RB.
Populus tremula, 12-14cm gth., 3m ht, BR.
 - Shrubs to be planted at 1 m centres
Cornus avellana, 90-120cm ht, BR.
Crataegus monogyna, 90-120cm ht, BR.
Ilex aquifolium, 60-90cm ht, RB.
Viburnum opulus, 90-120cm ht, BR.
Prunus spinosa, 90-120cm ht, BR.
Sambucus nigra, 90-120cm ht, BR.
Euonymus europaeus, 90-120cm ht, BR.
Rosa canina, 90-120cm ht, BR.
Hedera Hibernica, 2L, CG.
- INDICATIVE OUTLINE OF EXISTING VEGETATION RETAINED**
- HEDGEROW TO BOUNDARY TO INCLUDE**
 5% *Quercus petraea* BR, 6-8cm girth
 10% *Cornus avellana* BR, 90-120cm ht
 10% *Sambucus nigra* BR, 90-120cm ht
 35% *Crataegus monogyna* BR, 90-120cm ht
 35% *Ilex aquifolium* CG, 90-120cm ht
- FORMAL HEDGE TO INCLUDE**
Ilex aquifolium CG, 90-120cm ht
Fagus sylvatica CG, 90-120cm ht
Buxus sempervirens, CG, 40-50cm ht
- SHRUBS AND GROUND COVER PLANTING TO INCLUDE**
Sarcococca hookeriana var. *humilis*, CG, 5L
Viburnum davidii, CG, 3L
Lavandula angustifolia, CG, 3L
Hypericum Hidote, CG, 5L
Cornus coccogrya, CG, 3L
Chiosya terrata, CG, 3L
Aucuba japonica 'Variegata', CG, 5L
Ceanothus thyrsiflorus var. *repens*, CG, 5L
Fatsia japonica, CG, 5L
- SEMI-NATIVE SHRUB PLANTS TO EMBANKMENT**
Hypericum Hidote, CG, 5L
Cornus avellana, 90-120cm ht, BR.
Crataegus monogyna, 90-120cm ht, BR.
Ilex aquifolium, 60-90cm ht, RB.
Viburnum opulus, 90-120cm ht, BR.
Prunus spinosa, 90-120cm ht, BR.
Euonymus europaeus, 90-120cm ht, BR.
Spiraea 'Arguta', 5L, PG at 1m spacing
- WILDFLOWER MEADOW PLANTING**
Allium schoenoprasum, CG, 3P
Elysiun 'Bowles Malvar', CG, 3L
Lavandula hidote, CG, 2L
Nepeta 'Blue Carpet', CG, 2L
Panicum affinis 'Superb', CG, 2L
Rosmarinus officinalis 'Miss Jessop's Upright', CG, 3L
Stachys Byzantina, CG, 2L
Stipa tenuissima 'Thony Falls', CG, 2L
Thymus vulgaris, CG, 2L
Verbena bonariensis, CG, 2L



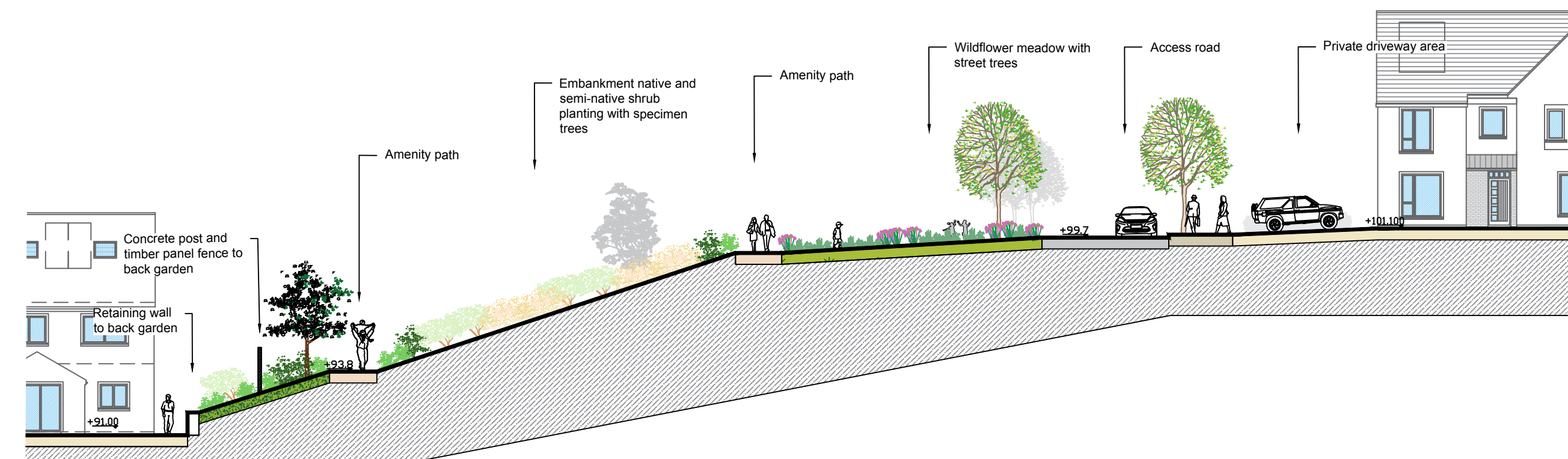
SECTION 17 - 17, SCALE 1:200 @ A0



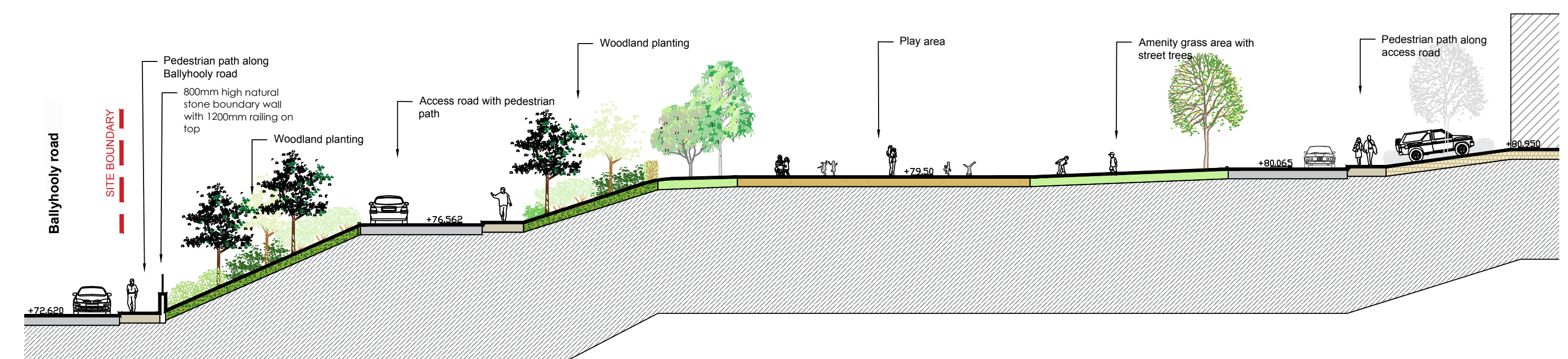
SECTION 14 - 14, SCALE 1:200 @ A0



SECTION 16 - 16, SCALE 1:200 @ A0



SECTION 15 - 15, SCALE 1:200 @ A0



SECTION 13 - 13, SCALE 1:200 @ A0

NOTE: THIS DRAWING IS INTENDED FOR THE PURPOSE OF MAKING A PLANNING APPLICATION AND MAY NOT BE USED FOR ANY OTHER PURPOSE.

REV	DATE	AMENDMENT

CUNNANE STRATTON REYNOLDS
LAND PLANNING & DESIGN

CORK OFFICE
 CORLEY HALL, COTTERS STREET CORK
 TEL 021 496 6224 FAX 021 496 9012
 EMAIL corkinfo@csrlandplan.ie

PROJECT: PROPOSED STRATEGIC HOUSE DEVELOPMENT, LAHARDANE, BALLYVOLANE, CO. CORK
DRAWING: LANDSCAPE MASTER PLAN NEIGHBOURHOOD 4

DATE: NOVEMBER 2019
SCALE: 1:500 @ A0
DRAWN: AT
CHECKED: JK
DRAWING NO.: 17316-2-106